

# P.W. Progress

## Special Interest Articles:

- New rules for special events on roads, page 3
- German Prisoner of War camp in Napa?, page 5
- Airport gets greener, page 6

## Sections:

Animal Shelter 2

Water and Natural Resources 4

Napa County Public Works  
1195 Third St., Suite 101 Napa CA 94559

(707) 253-4351

[PublicWorks@countyofnapa.org](mailto:PublicWorks@countyofnapa.org)

## Oakville Crossroad Bridge Opens



**Supervisors Diane Dillon, Brad Wagenknecht and Alfredo Pedroza, along with (2<sup>nd</sup> from left) Congressional Representative Mike Thompson, cut the ribbon opening the bridge to traffic**

The Oakville Crossroad Bridge, over the Napa River between Highway 29 and Silverado Trail, reopened January 21, 2016.

The bridge had been identified as structurally deficient for many years, and plans were already under way to replace it, when the bridge was closed in May, 2015 as a result of damage from a 4.1-magnitude earthquake.

Because the earthquake resulted in closure of the

bridge, the replacement plan was accelerated. The bridge was demolished in June, and the new one completed last month. The project cost about \$7 million, which was primarily funded by the Federal Highway Administration.



**View of completed bridge**

## Greenwood Avenue Bridge Opens (that's 2 in a month!)

On December 28, a bridge was opened on Greenwood Avenue, just outside the City of Calistoga, where it crosses the headwater of the Napa River west of Myrtle Dale Road.

The river was carried under the road for many years by a 15-foot diameter corrugated metal culvert. In December, 2014, severe storms damaged this culvert and required closure of the road above it. A temporary road was quickly constructed to provide access to nine properties that were isolated by the closure.

The new bridge is a 75-foot long, 24-foot wide precast concrete structure. In addition to the bridge, the project included regrading the channel bottom with a series of rock weirs and pools, to accommodate fish passage during low flows in the river.

The total cost of the project was approximately \$2 million, with funding from Measure A, the Coastal Conservancy, the Environmental Protection Agency and Napa County Road Funds.



**Above: Resident Tom Peltier cuts the ribbon**

**Below: Finished product**



### Happy news from the Animal Shelter!

A sampling of recent adoption success stories and other happy news from the Animal Shelter Facebook page

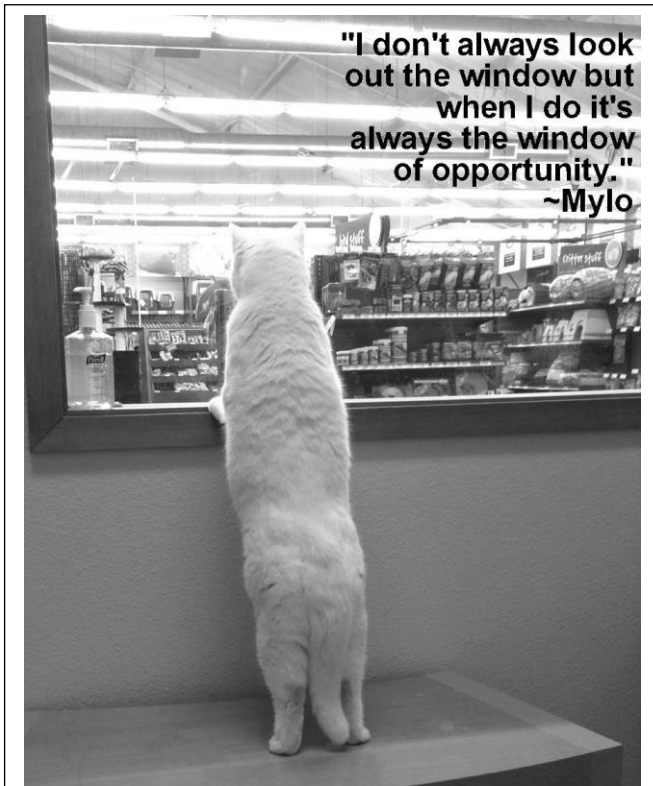
Sometimes you are thankful for how things pan out. Recently a sweet little Doxie mix showed up at the Shelter. Someone had dumped her, along with three other Doxies on Soda Canyon Road.

and Ferals informed us she knew someone who would take this dog. This group is a local all-volunteer non-profit rescuing animals and helping connect them with homes.

This sweet little girl is on her way to being taken care of properly.

Thank you, thank you, thank you!

This first little girl (right) came to us with two deformed front legs. A representative of local group Whiskers, Tails

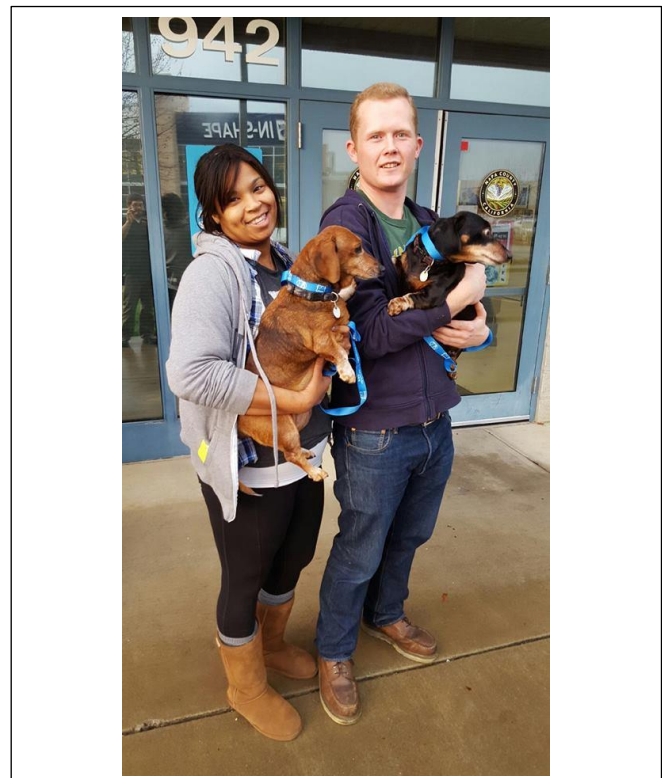


"I don't always look out the window but when I do it's always the window of opportunity."  
~Mylo

*Mylo, the most interesting cat in the world*

*...now available for adoption at Pet Food Express.*

**Tears of joy at the Shelter (right):** On December 15, two senior dachshunds came in due to their owner passing away. No next-of-kin was available to take them. Then in early January, a young man named Joe was at the Shelter and asked if that was Rocko and Apollo in the first kennel. He had known these dogs since he was 14! When he found out their story, he talked to his girlfriend about taking them home. After Rose met the two, she could not say no. Thank you, Joe and Rose, for making our day!



## Changes coming for special events on Napa County roads

In February, the Board of Supervisors adopted changes to the rules which govern the conduct of special events on public roadways in Napa County. These include marathons, bicycling events, triathlons and any other organized activity of 50 or more people.

A key provision of the new rules is a limit on the frequency of such events: no more than two per month, and one per weekend, at any location on the arterial roadways (State highways, Silverado Trail, etc.) A second small event may be permitted on the same date in limited circumstances.

Full road closures on arterial roads will only be permitted

for events with a minimum of 1,000 participants.

Message boards will be required to be placed along the course for all events. This was previously required only for those events with full road closures.

Relay-types events are no longer permitted on Highway 29 or Silverado Trail north of Trancas Street in Napa.

Filming activities (for movies, television or commercials) are now subject to the same requirements as the cycling/running events noted above.

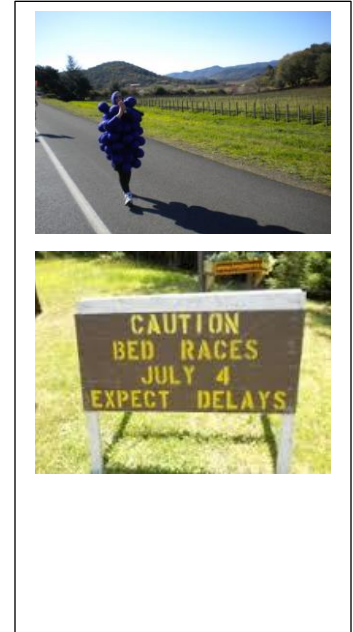
Staff is working to notify the public about the changes, and to improve ways by which residents and businesses can be informed

of events planned in their area which may affect them.

People are encouraged to sign up for Nixle notifications ([www.local.nixle.com/register/](http://www.local.nixle.com/register/)) which will be sent out two weeks prior to each event, then again two days prior.

In addition, a page has been added to the County's website where more information can be obtained about upcoming events ([www.countyofnapa.org/RoadEvents](http://www.countyofnapa.org/RoadEvents)). The page will include a comment form, plus people can also submit comments by email to [RoadEvents@countyofnapa.org](mailto:RoadEvents@countyofnapa.org) or call (707) 944-0196.

The special events will also be included on the new GIS road information service described below.



## The road (map) ahead looks bright

Staff from the Roads Division have worked together with the County's Information Services group to develop a new GIS-based tool for providing information about the County's roads on the web!

A visit to <http://services.countyofnapa.org/RoadInfo> will provide a continually-updated view into current and upcoming activities that will affect users of Napa County's road system.

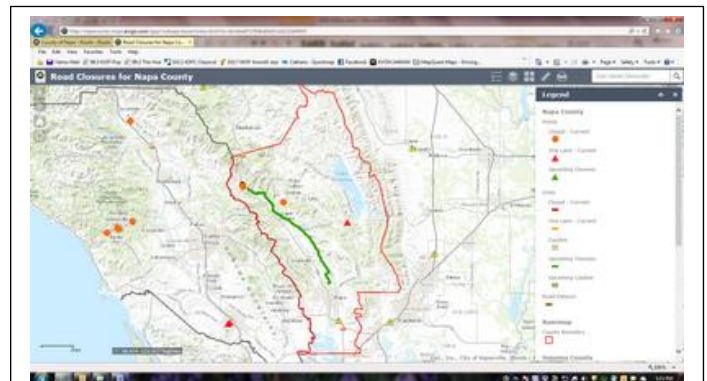
The information includes planned construction and maintenance activities, as well as emergency situations which result in roads being closed or traffic restricted.

The service is also linked to updates posted by Caltrans and the California Highway Patrol.

In the screen shot at right, the map is showing:

- two current road closures (power lines down, quake-damaged bridge)
- one-lane restriction (rockslide)
- traffic incident (plank in roadway)
- Caltrans work (Hwy 12 shoulder landscaping)
- Upcoming closure (Napa Valley Marathon)

Users can click each one for more information.



Screen shot from <http://services.countyofnapa.org/RoadInfo>



**Upper Putah Creek near Butts Canyon**

## Taking care of our watersheds after fire events

The 2015 wildfire season left a devastating toll, scarring mountainous slopes throughout northeastern Napa County and over 75,000 acres within the southern third of Lake County.

Cal Fire and other State agency participants published a post-wildfire Watershed Emergency Response Team report in October of last year. Experts on the investigative panel compiled fire perimeter

damage assessments, geologic conditions, topographic maps and other pertinent data to build a computerized model for predicting debris mobilization and erosion of soils. Results of the study assigned a moderate erosion hazard rating for some locales within the Upper Putah Creek watershed.

To better understand the environmental impacts of storm water runoff originating

from fire ravaged areas, Napa County has teamed with Solano County Water Agency to monitor stream quality in the midst of winter storm events. Baseline data and visual observations captured thus far indicate some presence of ash and sediment load into the Upper Putah Creek basin, after the mid-January storms deposited 2 to 3 inches of rain in the watershed region.

## INITIAL M.S.T. RECYCLED WATER PROJECT CONSTRUCTION COMPLETED

Construction of the 4.5 mile pipeline and pump station project in Coombsville is essentially complete. It is a significant portion of a much larger project that is envisioned to supply up to 2,000 acre-feet per year to the MST Groundwater Deficiency area.

The \$14 million construction cost was paid

through a Bureau of Reclamation WaterSmart grant and a Prop 84 grant obtained through the assistance of the North Bay Water Reuse Authority.

Additionally, the State Water Resources Control Board provided a Prop 1 grant to supplement a State Revolving Fund loan obtained by the County. The

loan will be paid back through a Community Facilities District consisting of the Napa Valley Country Club, several vineyards and numerous homeowners.

Over 50 property owners volunteered to be taxed to pay for the project. Property owners are now working with Napa Sanitation District to connect to the pipeline with

recycled water deliveries to begin this spring. Public Works staff is now working on an expansion to serve additional properties including the Silverado Middle School and Tulocay Cemetery.



## Napa River Rutherford Reach Restoration wins Riparian Challenge Award

The Napa River Rutherford Reach Restoration Project (Project) was developed to restore 4.5 miles of the Napa River between Zinfandel Lane and Oakville Crossroad and was completed in 2015. The Project was nominated and has won the [American Fisheries Society](#) 2016 **Riparian Challenge Award**. The Society is the world's oldest and largest "scientific and professional" organization dedicated to strengthening the fisheries profession, advancing fisheries science, and conserving fisheries resources.

The mission of the Society is to advance sound science, promote professional development, and disseminate science-based fisheries information for the global protection, conservation, and sustainability of fishery resources and aquatic ecosystems.

Some 3,500 strong, the Society's members represent a tremendous array of fisheries workers involved in all aspects of the fisheries profession. The Project was recognized because of the unique public private partnership that was forged

between the County, Resource Conservation District and 29 different private entities to restore fisheries habitat within the Napa River.

The Project was designed to enhance long-term river and floodplain function, improve the quality and resilience of aquatic and terrestrial riparian habitat, and reduce property damage and sediment delivery associated with ongoing bank erosion processes.

The Project includes restoration elements and features to widen the

channel, reduce channel bank erosion, improve the quality and resilience of aquatic and terrestrial habitat, and enhance overall channel and floodplain function along the Napa River. This prestigious award speaks to the County's and local community's collaborative approach and commitment to sustainable natural resource management.



## German Prisoner of War Camp in Napa?



**Steve Lederer**  
**Director of Public Works**

The parcel of land below and just to the south of Rector Dam on Silverado Trail has been the County's Corporate Yard for our Roads Division for decades. But what was there before the County? Though not a secret by any means, most residents today don't know that at the end of the Second World War the land served as a Prisoner of War camp for German soldiers.

This land (part of a much larger existing parcel) passed

from the Caymus Land Company to the State of California in 1912 for the sum of "\$10 Gold Coin."

During the course of WW2, the United Kingdom requested that the United States develop a system of POW camps to relieve overcrowding that was occurring in the British camps. In 1943, plans were drawn up and approved by the Board of Supervisors to expand an existing "Farm Labor" Camp. The Camp was constructed of materials salvaged and moved from "Camp Golden Gate," which appears to have been located under the north tower of the Golden Gate Bridge. Camp Napa was an annex of Camp Beale (later renamed Beale Air Force Base).

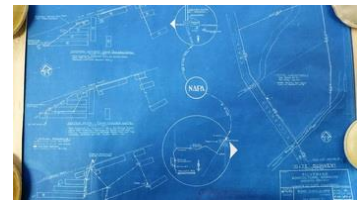
The camp was located just north of Rector Creek, on the east side of Silverado Trail. Some previous literature has located the camp as being south of the creek (where the majority of the County buildings are now), but these sources are not accurate.

On Aug. 14, 1945, three months after the German surrender and the day the Japanese agreed to a conditional surrender, 250 German POW's were received at Camp Napa. Most prisoners performed labor on surrounding farms and, per the Geneva Convention, were paid \$.80/day in "scrip" as real currency could be used in an escape attempt. Social activities were offered in the camp and were frequently attended by local citizens.

After the war ended, the prisoners were repatriated to Germany. Many returned to the USA to renew acquaintances with their former captors, start families, launch new careers and become US citizens.

The land remained State-owned property until the County purchased one portion (for \$2,329) in 1956 and the remainder in 1966.

The County is working with the Sam Brannan Chapter 1004 of E Clampus Vitus to dedicate a historical marker at the site. Placement and dedication of the marker is planned for September 17, 2016.



**Original "blueprints" for the camp on Silverado Trail**

## Vine Trail scores another big grant

The Metropolitan Transportation Commission recently selected the Napa Valley Vine Trail to receive \$6.1 million from the regional Active Transportation Program.

This grant will cover the majority of the cost of constructing the trail 9 miles to connect the cities of St. Helena and Calistoga.

This is the second successful ATP grant for the Vine Trail. Previously, \$3.6 million was awarded for the 6 mile stretch currently under construction between Yountville and Napa. When complete, the Vine Trail will provide a continuous Class 1 bicycle/pedestrian path for nearly 14 miles, from

Yountville to Napa Valley College.

Highway 29 between Calistoga and St. Helena is a heavily traveled, narrow road used by both local residents and tourists. Providing a separated path will provide a much safer, car-free connection between the two communities.

The Napa Valley Vine Trail, when completed, will provide such a path all the way from Calistoga to the Ferry Terminal in Vallejo, a total distance of 47 miles.

The two grant-funded segments of the Vine Trail have been the result of a

unique public-private partnership between the Napa Valley Vine Trail Coalition and the Napa County Transportation & Planning Agency. Matching funds have been contributed from multiple sources, including the Napa Valley Vintners and Visit Napa Valley. The cities of Calistoga, St. Helena, Napa, the Town of Yountville and the County of Napa have all contributed to the portions of the project in their jurisdictions.



**Views of current construction between Yountville and Napa**

## Napa County Public Works



A Tradition of Stewardship  
A Commitment to Service

1195 Third Street  
Suite 101  
Napa, CA 94559

PHONE:  
(707) 253-4351

FAX:  
(707) 253-4627

E-MAIL:  
[PublicWorks@countyofnapa.org](mailto:PublicWorks@countyofnapa.org)

We're on the Web!

See us at:

[http://www.countyofnapa.org/  
PublicWorks/](http://www.countyofnapa.org/PublicWorks/)

## The Airport Gets a Little Greener!

In an ongoing effort to reduce water use, the Airport has installed artificial turf!

The project replaced grass around the terminal building and monument sign, thereby eliminating the need for landscape watering at County controlled facilities at the airport.



*Airport Terminal: airside (left) and landside (right)*

### ***About Napa County Public Works..***

*The Department of Public Works is dedicated to sustaining health, safety, quality of life and protection of natural resources by providing and maintaining public*

*facilities and services in partnership with the community and other public agencies for current and future residents, workers, visitors and animals of Napa County.*

#### **Public Works values...**

- Fiscal Responsibility
- Accountability
- Transparency
- Integrity
- Service
- Teamwork